

BIRTHDAYS

\$34
Per Person

All Apex Birthday Parties include 1 main attraction choice that lasts approximately 45 minutes to 1 hour, 30 minutes of arcade time, individual kids meals, a private party room for 45 minutes, and a private party host to help make the birthday child's day extraordinary!

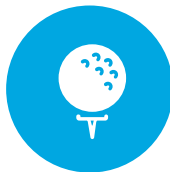
Choose Your Attraction

Step 1

Choose one main attraction for your party. Each choice also includes 30 minute arcade cards, and 150 redemption tickets for the guest of honor.



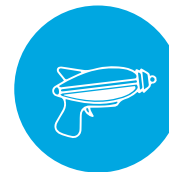
Bowling



Mini Golf



APEXkids



Laser Tag

Choose Your Menu

Step 2

Choose two kids meal options to be offered during your event. Kids meals are served with the choice of french fries or a fruit cup. Unlimited soda & juice is served throughout the party. Private party room for 45 minutes.

Pizza | Chicken Strips | Hot Dog | Mac N Cheese
Grilled Cheese | Cheeseburger | Cheese Quesadilla

21 Apex Dr. Marlborough, MA 01752 | (508) 251-8666

CUSTOMIZE YOUR BIRTHDAY EXPERIENCE

Want to make the birthday child's party extra special. Customize your party with an array of attractions, food, decorations, take home items, or even a personalized visit from their favorite costumed character!

Add An Attraction

\$9
Per Person

Adding an attraction will extend the length of your party.

30 Minutes



Bowling



Bumper Cars



Arcade



Sports Sims



APEXkids

1 Session



Laser Tag



Ropes Course

Extra Snacks

- \$20 - The Pretzel
- \$45 - Chicken Wing or Tender Platter
- \$16 - Cheese Pizza
- \$18 - Pepperoni Pizza
- \$30 - Fried Dough Bites
- \$3 - Ice Cream Sandwiches

Souvenirs

- \$4 - Goodie Bags
 - \$3 - Sipper Pin
 - \$24 - Signature Bowling Pin
 - \$1.50 - 150 Redemption tickets
- Ask about theme packages and costume character visits!

21 Apex Dr. Marlborough, MA 01752 | (508) 251-8666

Apex Entertainment cannot guarantee your attraction(s) reservations will be private for just your party.

No outside food is permitted except for a store or bakery bought nut free cake or cupcakes.

Timed arcade cards start timing at first swipe, can only be used on one arcade game at a time, and colored card swipers are used to designate which games they can be used on.